



Research Expedition Yacht – Dione Sky

Make:	Research Expedition Yacht	Boat Name:	Dione Sky
Length:	151 ft	Hull Material:	Aluminum
Price:	\$ 15,000,000	Number of Engines:	2
Year:	1996	Fuel Type:	Diesel
Condition:	Used	Number:	4110572
Location:	Barcelona, Spain		

Dione Sky

Research Expedition Yacht. This custom built superyacht was built in 1996 and designed and built by Palmer Johnson to go absolutely anywhere in extreme comfort and safety, and recently returned from a trip through the North West Passage to prove it once again. Luxurious accommodation throughout and that includes the crew. All of the robust equipment you would expect for this type of vessel, plus some indulgent toys too! 'Dione Sky' has grace and elegance and packs a punch if you need her to.

Nicholson Yachts

109 Long Wharf, Newport, RI 02840, United States

Toll-free: 855-887-2317 Tel: 401-849-0344 denny@nicholsonyachts.com

<http://www.nicholsonyachts.com>

Measurements

Cruising Speed:	12.5 kn	Windlass:	Hydraulic Windlass
Max Speed:	14 kn		
Range:	7000 nmi	Electrical Circuit:	24V
LOA:	151 ft	Liferaft Capacity:	100
LWL:	136 ft 10 in	Fuel Tanks Capacity:	35628 gal (UK)
Beam:	28 ft 11 in	Fresh Water Tanks Capacity:	3566 gal (UK)
Min. Draft:	10 ft 6 in		
		Number of single berths:	1
		Number of double berths:	4
		Number of twin berths:	5
		Number of Cabins:	9
		Number of Bathrooms:	9
		Number of Heads:	9

Propulsion

Number of Engines:	2	Engine Year:	1996
Primary Engines:	Inboard	Total Power:	1720 hp
Drive Type:	Direct Drive	Propeller Type:	5 Blade
Engine Make:	Caterpillar		
Engine Model:	3508 DITS "C"		

Features

Electronics

- Depthsounder
- Log-Speedometer
- Computer
- TV Set
- VCR
- DVD Player
- Radio
- CD Player
- VHF
- Radar
- Wind Speed and Direction
- Repeater(s)
- Navigation Center
- Plotter
- Autopilot
- Compass
- GPS

Inside Equipment

- Dishwasher
- Washing Machine
- Oven
- Air Compressor
- Electric Head
- Hot Water
- Fresh Water Maker
- Bow Thruster
- Electric Bilge Pump
- Microwave Oven
- Air Conditioning
- Heating
- Refrigerator
- Deep Freezer

Electrical Equipment

- Shore Power Inlet
- Inverter
- Generator

Outside Equipment/Extras

- Teak Sidedecks
- Tender
- Cockpit Cushions
- Swimming Ladder
- Hydraulic Gangway
- Liferaft
- Cockpit Table

Construction

Built in 1996 by Palmer Johnson, Netherlands
Designed by Vripack Yachting

Construction:

Aluminium hull, deck and superstructure
Completely repainted with Awlgrip in 2007
Topsides repainted with Awlgrip 2010
Oak laid decking, re-caulked 2007
Round bilged displacement hull
American Bureau of Shipping (ABS) A1 classification
MCA Caymans Commercial compliance
Refit 2007, 2010/2011
ABS Five Year Special Survey completed, 2011

Mechanical

Mechanical:

Powered by 2 x Caterpillar 3508 DITA 'C' diesel engines producing 860hp @ 1,300 rpm
Full engine rebuild by Caterpillar 2013, and to 'zero hour' specification including
repaint
MG540 2.58:1 reduction gearboxes
Shaft drive with Vulkan RATO 1911 flexible couplings

Twin disc

Aquaprop HSP-5N five blade high skew propellers
Cruising speed approx 12.5 knots @ 50% load
Maximum speed approx 14 knots
Range 7,000 nm +

Anschutz steering system with bridge helm wheel, bridge tiller and bridge wing tiller controls
Emergency steering controls in lazarette and engine control room
Dual hydraulic bow thrusters
2 x Naiad/Koopnautic zero speed stabilizers, new 2007
2 x Sullair air cooled compressors
Brownie Third Lung dive compressor with dive tanks and equipment
Machinery space fans
2 x Forced draught engine room vent fans
Hydraulic Orbital emergency steering
2 x Alfa Laval fuel centrifuges
Facet oil/water separator

Electrics:

2 x Northern Lights M1066T 99kw generators, new 2010
Shorepower with 2 x 100amp circuit breakers and Exendis frequency converter
Dual parallel 24v DC system
Split bus system
Automatic generator/shorepower synchronization and load distribution
Custom alarm/monitoring/control system with SCADA units on bridge, in engine room and crew mess. Remote indicator panels in engineers cabins.

Tankage:

Fuel capacity; 161,967 litres/42,788 US gallons/35,628 Imp gallons
Fresh water capacity: 16,260 litres/4,300 US gallons/3,566 Imp gallons
Tanks cleaned and coated as necessary for 5 year ABS survey

Water System:

Water Maker Inc' reverse osmosis water maker, 5 tons per day
Idromar reverse osmosis water maker, 5 tons per day
Hamann Wessertechnik Type II MSD black water treatment
Diesel fired boiler for heating water circuit
3 x Domestic hot water heaters
4 x Copeland hermetic compressors for chilled cold water circuit

Inventory

Ground Tackle:

2 x Maxwell 18000 Windlasses with chain stoppers
2 x Maxwell VC6000 hydraulic warping capstans aft
2 x Pool-N type fully balanced stockless anchors
Spare anchor as above
24mm stud link chain port and starboard
Mooring lines

Deck Equipment:

Tender crane
Port and starboard accommodation ladders
Ships bell

Safety Equipment:

4 x 25-person RFD MCA offshore liferafts
FM200 fire suppressant system in machinery space, new 2007
Full fire detection system
Life-rings with lights and smoke signals
SOLAS approved life-jackets
SOLAS approved life-vests
Childrens approved life-vests
Safety flares as required by class
Firemans axes
2 x Complete fire suits
Extinguishers as required by class
Fire fighting equipment as required by MCA code classification for commercially registered vessels
18 x Survival suits
CCTV cameras permanently scanning and recording to DVR
3 x 406 MHz GPS EPIRB's
2 x Jotron SART's
2 x ACR survival craft VHF radio's
Carlisle and Finch 1000w 20" searchlight
2 x Carlisle and Finch 10" searchlights
Kahlenberg triple airhorn with fog signal timer
FLIR infrared night vision camera with helm control and 19" monitor

General Communication Equipment:

VSAT Broadband Data system
Iridium voice/data system
Fleet 500 Inmarsat voice/fax/data system
Invectica Yachtspot wi-fi antenna/router
GMDSS and safety communication equipment
2 x Thrane and Thrane Inmarsat C systems
Sailor 250w DSC MF/HF radio
2 x Sailor DSC VHF radio's
JRC Navtex receiver JRC automatic identification system
Furuno FAX-30 weatherfax interfaced with onboard LAN

Internal Communication Equipment:

Wired and wireless LAN's
4 x Wifi routers
Panasonic digital telephone system with phones in every room
4 x Computers
Guest PC and printer in library
Satellite TV multi-switching providing TV to all cabins and saloons
Standard Horizon loudhailer

Emergency wind-up phone, bridge to engine room
Handheld submercible ICOM VHF radio

Entertainment:

Seatel 4004 satellite TVRO antenna
All guest and crew cabins and gym have HI-fi systems, DVD players and monitors

Tenders:

2 x 6.6 metre custom built NAIAD aluminium RIB's with 260hp Yanmar diesel engines and Hamilton jet drives, new 2010

Navigation Equipment:

Alphatron Alpha minicourse gyro compass
Cassens and Plath magnetic deck mounted compass
Anschutz Nautopilot D autopilot
Anschutz Pilotstar D autopilot
Anschutz rudder angle indicator on bridge and at emergency steering position
Anschutz Nautocourse gyro/magnetic selector with deviation, variation and latitude correction
Anschutz compass repeaters
2 x Simrad MX510 DGPS units
Furuno RD-30 multi display
Dual Brooks and Gatehouse Hercules 690 processors with several full function, 20/20 CD and analogue displays
JRC 25kw X-Band 7ft radar scanner
JRC 30w S-band 12ft radar scanner
4 x JRC 19" monitors
Furuno FCV-1150 colour video sounder
Furuno CH-250BB searchlight sonar
Nobletech Max-Pro world chart plotter with stand alone computer and 19" monitor
Clock, barometer, thermometer and inclinometer
International code flag set
Nautical publications as required by class

Accommodations

Accommodation consists of Owner's suite.
4 En-suite guest cabins, 2-double and 2-twin.
Captains en-suite double berth cabin.
3 En-suite twin berth crew cabins.
Pilot cabin with single bunk, pullman and head/shower.

The yacht offers traditional style and extensive use of American Cherry throughout the interior.
Air conditioning throughout, new 2007
New carpeting throughout in 2010

The **Observation Deck** above the bridge gives excellent all round visibility and with high canvas covered rails is a private sunbathing area. The 'wet' Cassens and Plath magnetic compass, FLIR camera and 20" search light are situated on this deck.

The large **Sun Deck** is partially covered by an awning. This area has a Jacuzzi, fixed dining table, a sun mattress area and has accommodated dozens of guests for parties and barbecues.

There is a 'Portuguese' style walk around bridge ahead of the wheel house with wing docking stations and doors to the wheelhouse /bridge. The **Bridge Deck** has a chart table to port, 'u' shaped 6 seater settee, Captain's desk and communications centre.

A staircase leads from the Bridge Deck to the **Owners Deck**. To port is the single pilots cabin. All of the third deck is for the exclusive use of the owner.

The **Owners Suite** has a centre line king-sized double bed. A large flat screen TV folds down when required. Walk in cedar lined closets and generous bathrooms finished in light marble complete the accommodation.

The **Owners Library** is aft, finished in American Cherry, with built in bookshelves, a desk (with internet connection), easy chairs and a settee. The built in entertainment system has a pop up flat screen TV with surround sound and DVD player.

Doors lead aft to the **Owners Sundeck** containing a bar area, sink, fridge and icemaker.

The **Guest accommodation** is accessed from central staircase in the main deck entrance foyer. To starboard is the **Gym**

The four **Guest Staterooms** (2-double and 2-twin) are generously laid out and each have en-suite facilities in grey marble.

All benefit from 3 large portholes which make them light and airy, audio and video equipment, cedar lined closets, bookshelves and a safe.

Main Deck: From forward there is access to the forepeak which contains the chain locker, chill room compressors and boatswain's stowage. Stairs to port and starboard lead to the **Boat Deck** with bosun's store to port and crew access stairway to starboard. The two 21' tenders are stowed here.

The fully equipped **Galley** is to port and has deck access. There is dinette seating for 8 and a central island worktop with dual ranges. There is a dumb waiter to the chef's pantry on the lower deck.

Included are: Ice maker, 2 x chiller drawers, 2 x Gaggenau Rangetops new 2011, Extractor hood, 2 x Viking dishwashers, garbage compactor, refrigerator/freezer, 2 x Gaggenau electric ovens, 2 x stainless steel sink units with garbage disposal, CCTV and VHF.

The **Dining Saloon** is full width and aft of the galley. This elegant room has a large table suitable for seating 12 guests.

Aft of the dining saloon is the elegant panelled **Library** with fitted shelves, sofa's and easy chairs and internet access.

Aft again is the **Entertainment and Video** room with TV, full range of audio and video equipment. Table, sofa's and easy chairs. Port and starboard doors lead to the **Main Deck (aft)** which has access to the owner's deck and to the retractable passerelle. A hydraulically operated

hatch leads to the lazarette and the machinery space. There is a full width fold down swimming and dinghy boarding platform. Hydraulic folding gangways are installed port and starboard amidships.

A full equipped **Workshop** with tools and machinery is on the **Lower Deck** forward. To port of this is the **Crew Mess** with its own audio and video equipment, CCTV monitors, B&G displays, VHF, tank monitors and alarms, microwave fridge etc.

Below the crew mess sole is the cavernous walk in **Chill Room**.

Below the crew corridor is the **Pump Room** and a walk around dry storage area. To port there is a **Laundry Room** with 2 x Miele professional washing machines, 2-speed commercial dryers and a large stainless steel wash tub. Behind the laundry is the **Pantry** with a further 2 x Traulsen fridge/freezers, a wine chiller and the dumb waiter.

Disclaimer

The Company offers the details of this vessel in good faith but cannot guarantee or warrant the accuracy of this information nor warrant the condition of the vessel. A buyer should instruct his agents, or his surveyors, to investigate such details as the buyer desires validated. This vessel is offered subject to prior sale, price change, or withdrawal without notice.

Photos



Research Expedition Yacht ' Dione Sky'



Research Expedition Yacht ' Dione Sky'



Research Expedition Yacht ' Dione Sky'



Research Expedition Yacht ' Dione Sky'



Research Expedition Yacht ' Dione Sky'



Research Expedition Yacht ' Dione Sky'



Research Expedition Yacht ' Dione Sky'



Research Expedition Yacht ' Dione Sky'



Research Expedition Yacht ' Dione Sky'



Research Expedition Yacht ' Dione Sky'



Research Expedition Yacht ' Dione Sky'



Research Expedition Yacht ' Dione Sky'



Research Expedition Yacht ' Dione Sky'



Research Expedition Yacht ' Dione Sky'



Research Expedition Yacht ' Dione Sky'



Research Expedition Yacht ' Dione Sky'



Research Expedition Yacht ' Dione Sky'



Research Expedition Yacht ' Dione Sky'



Research Expedition Yacht ' Dione Sky'



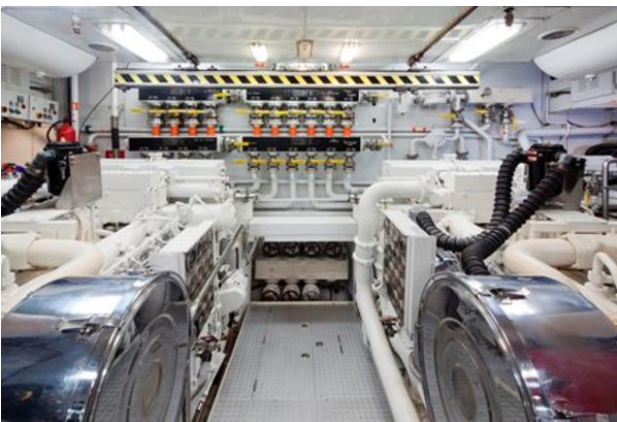
Research Expedition Yacht ' Dione Sky'



Research Expedition Yacht ' Dione Sky'



Research Expedition Yacht ' Dione Sky'



Research Expedition Yacht ' Dione Sky'



Research Expedition Yacht ' Dione Sky'



Research Expedition Yacht ' Dione Sky'



Research Expedition Yacht ' Dione Sky'



Research Expedition Yacht ' Dione Sky'